

# Sample Boards 2013

---

LAST UPDATED: 22-03-2021

---

DEMO



# Sample Boards

<b>13-006 Sample Board Shafiei IV .....</b>	<b>3</b>
<b>13-009 Sample Board Shafiei V .....</b>	<b>4</b>
<b>13-010 Sample Board Geresdi I .....</b>	<b>5</b>
<b>13-011 Sample Board Cassidy I .....</b>	<b>6</b>
<b>13-012 Sample Board Carel Heerkens .....</b>	<b>8</b>
<b>13-021 Sample Board Schneider I.....</b>	<b>9</b>
<b>13-022 Sample Board Bavinck I .....</b>	<b>10</b>
<b>13-023 Sample Board Cassidy II .....</b>	<b>11</b>
<b>13-023-1.....</b>	<b>11</b>
<b>13-023-2.....</b>	<b>12</b>
<b>13-023-3.....</b>	<b>13</b>
<b>13-028 Sample Board vWoerkom I.....</b>	<b>14</b>

# 13-006 Sample Board Shafiei IV

## Connector:

1x FFC35 Right Angle

3x SMA Right Angle

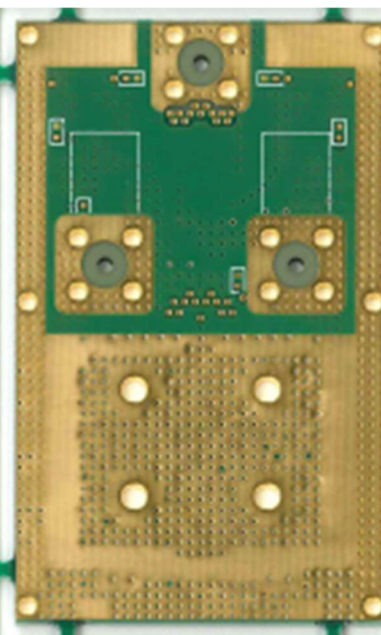
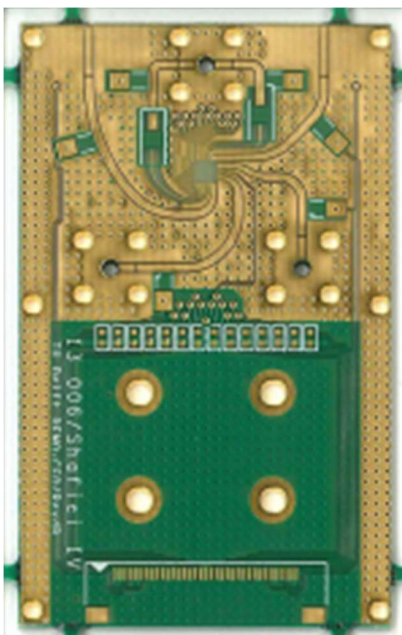
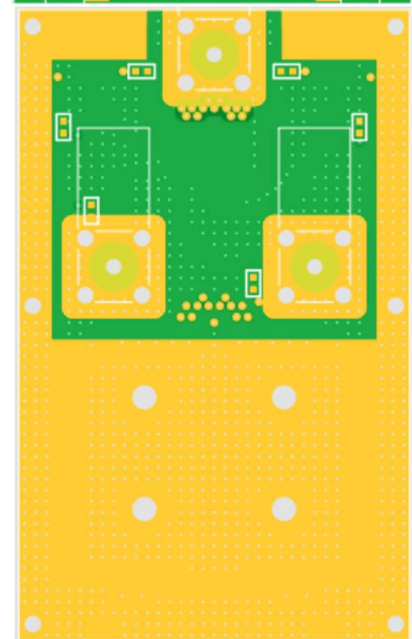
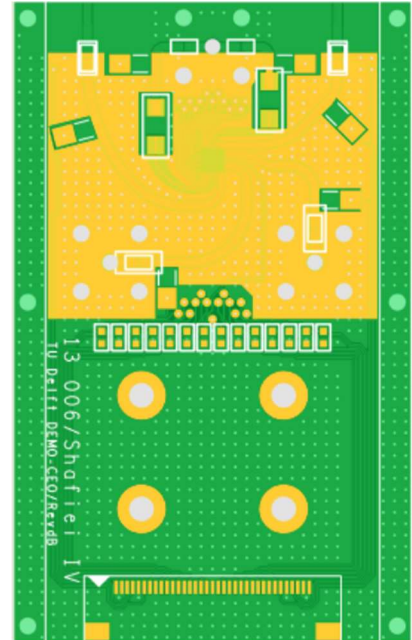
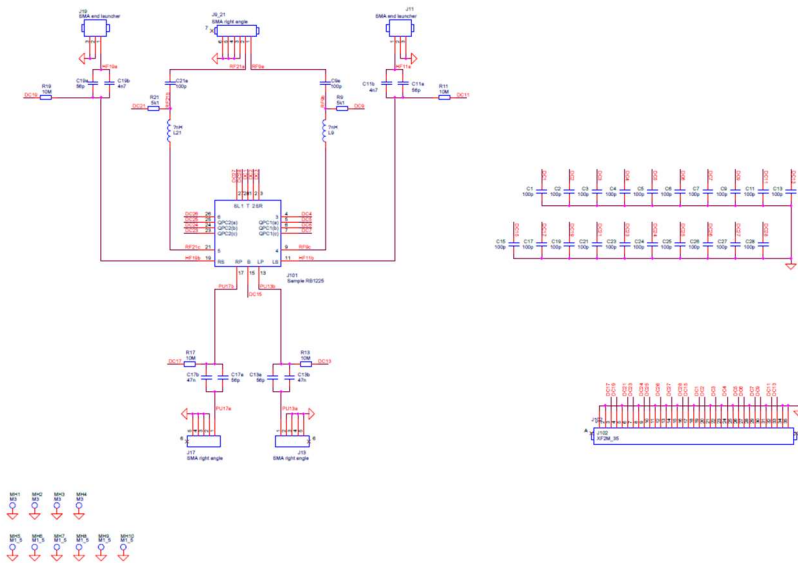
## Copper Finish:

Chemisch Au/Ni Selective

## Size (LxWxT):

56.5 x 35 x 1.55

## Schematic:





# 13-009 Sample Board Shafiei V

## Connector:

1x FFC35 Right Angle

3x SMA Straight Angle

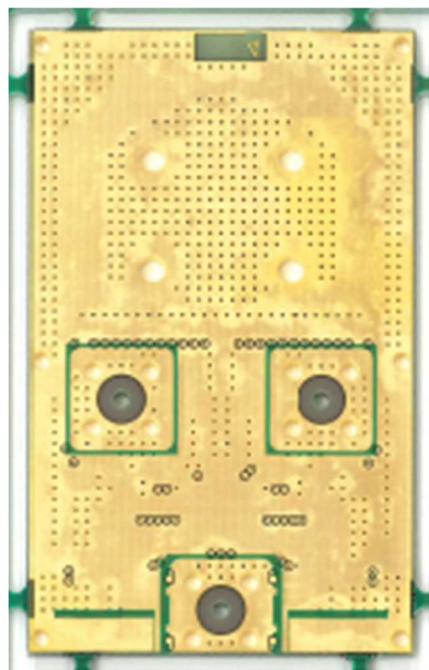
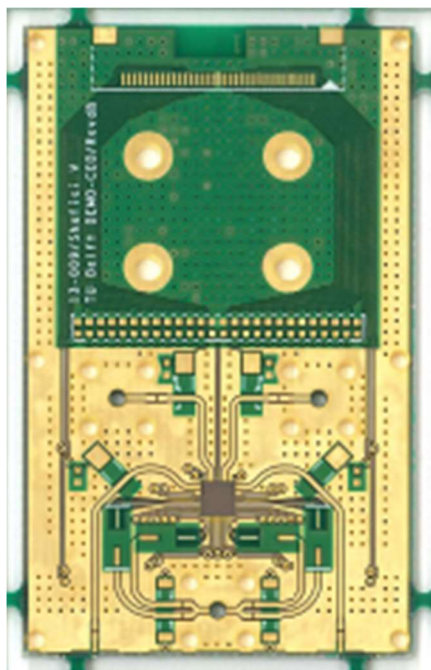
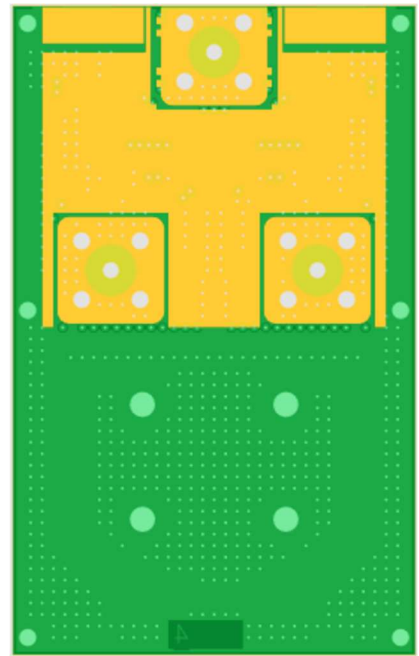
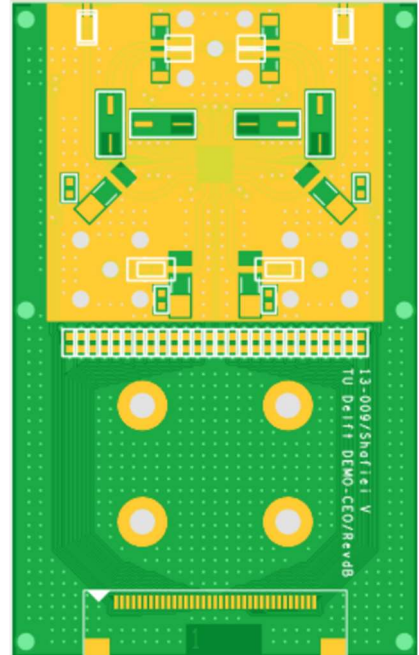
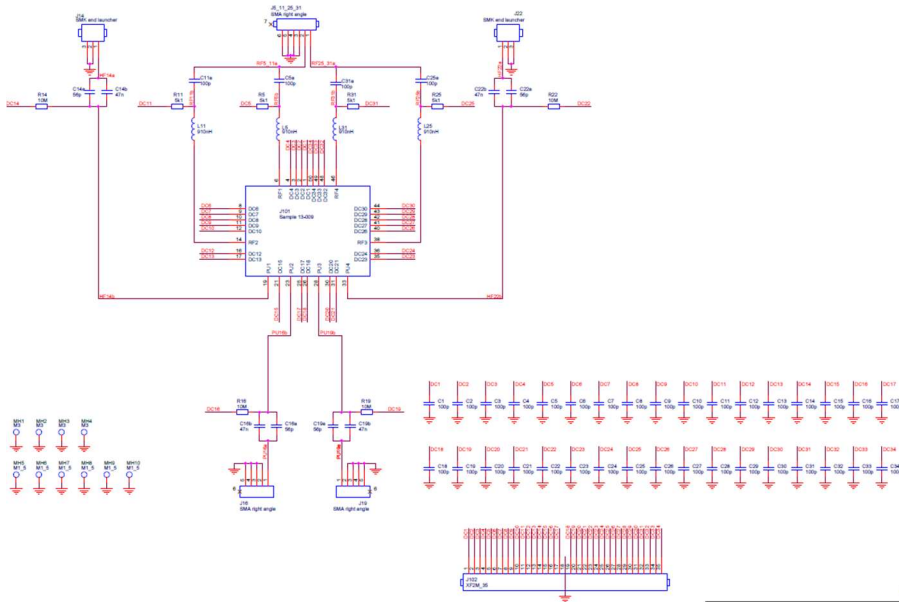
## Copper Finish:

Chemisch Au/Ni Selective

## Size (LxWxT):

57.24 x 35.1 x 1.55

## Schematic:



# 13-010 Sample Board Geresdi I

## Connector:

1x FFC35 Right Angle

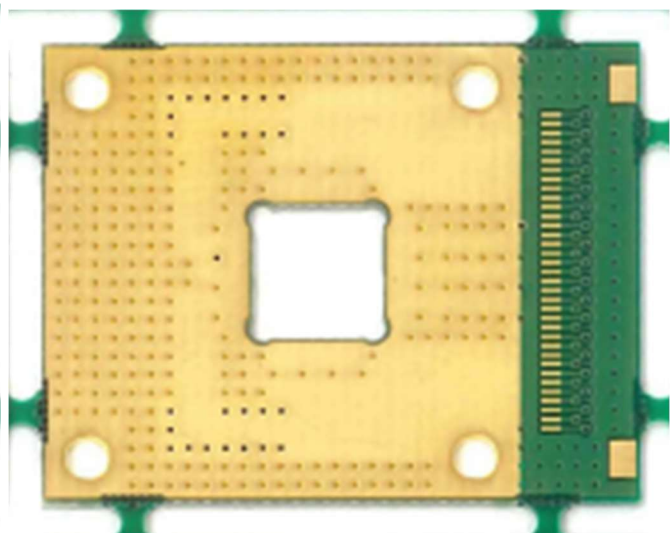
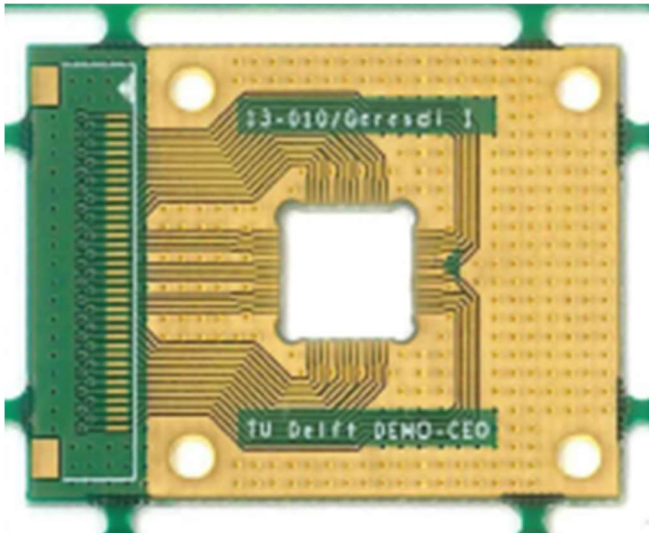
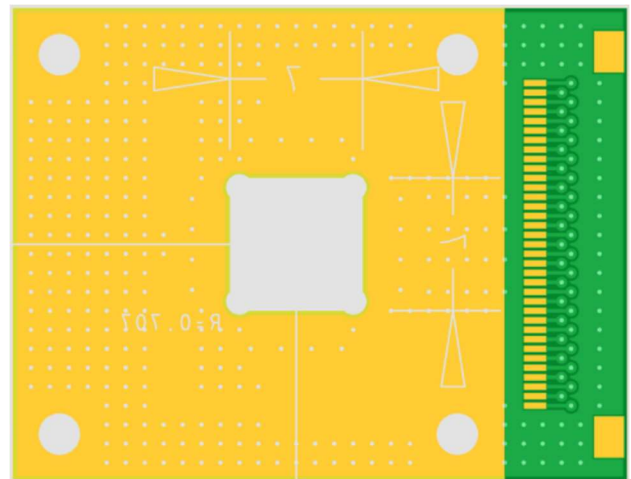
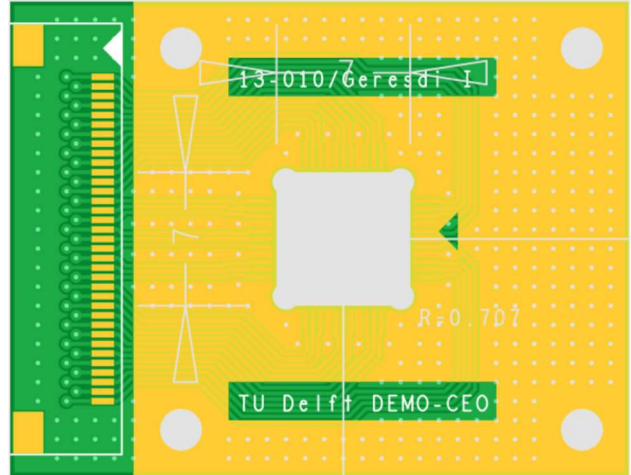
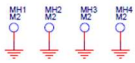
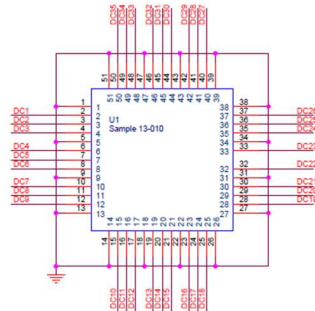
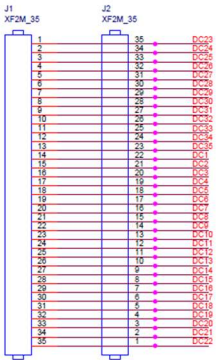
## Copper Finish:

Chemisch Au/Ni Selective

## Size (LxWxT):

25 x 32.5 x 0.8

## Schematic:



# 13-011 Sample Board Cassidy I

## Connector:

2x Nano-D 50 pins Right Angle

6x SMP Straight Angle

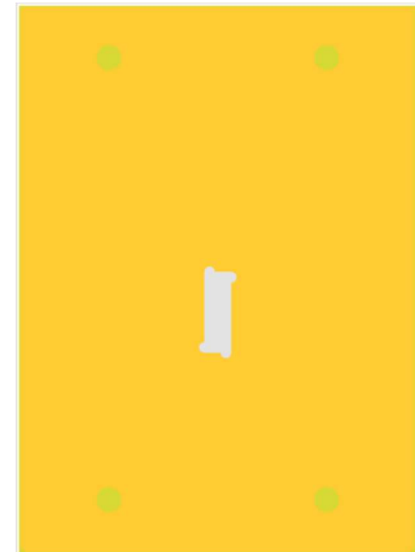
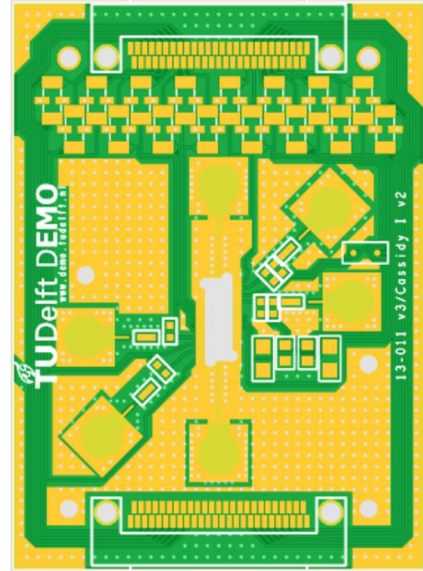
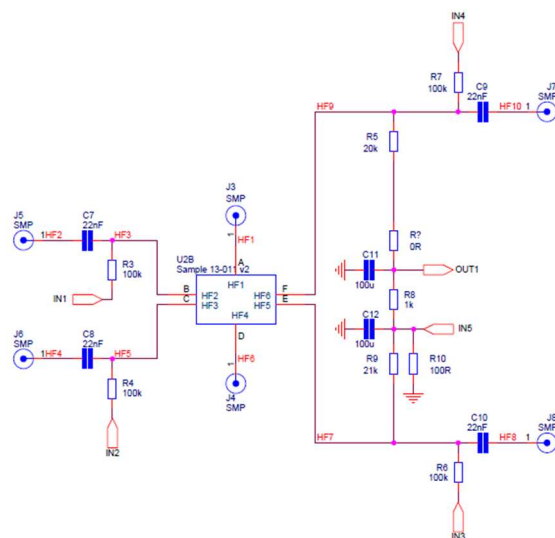
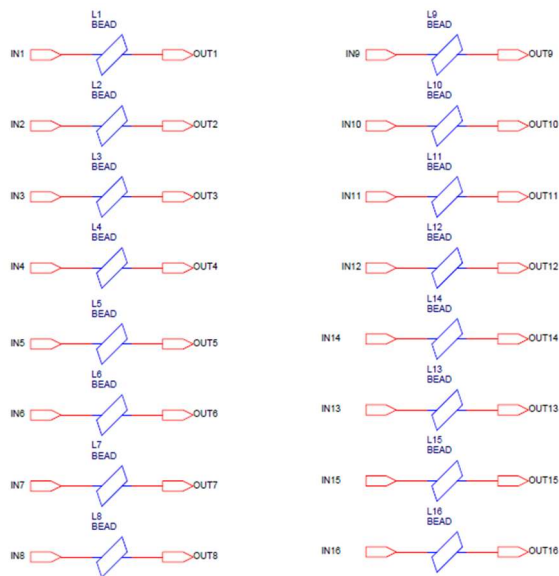
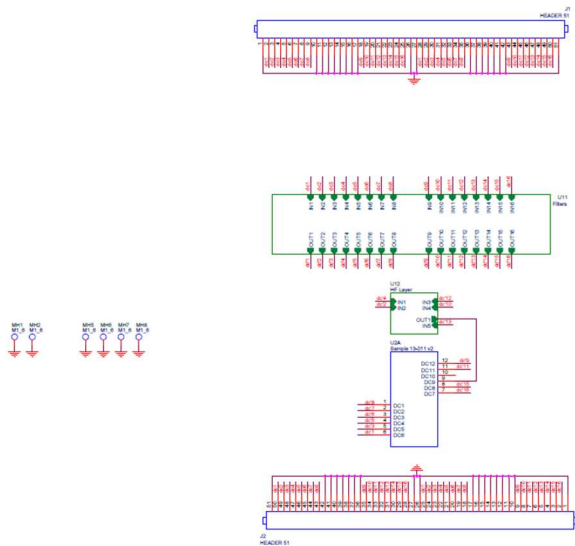
## Copper Finish:

Chemisch Au/Ni Selective

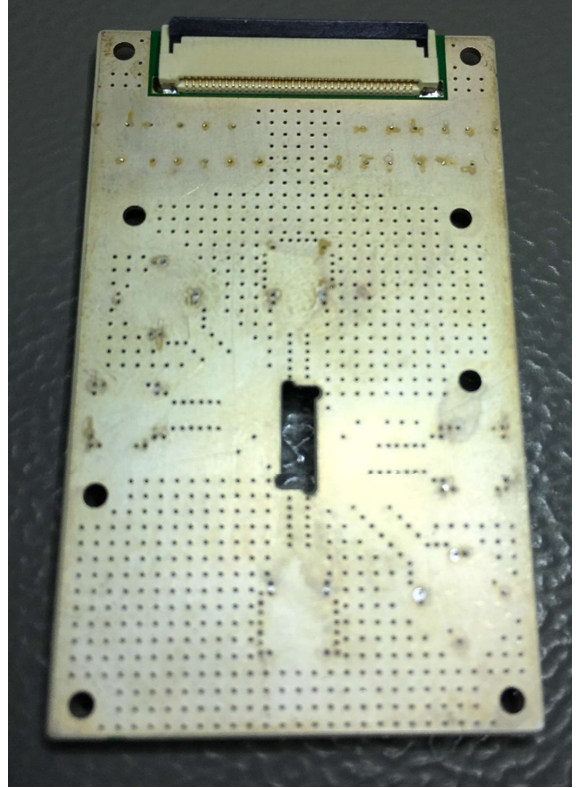
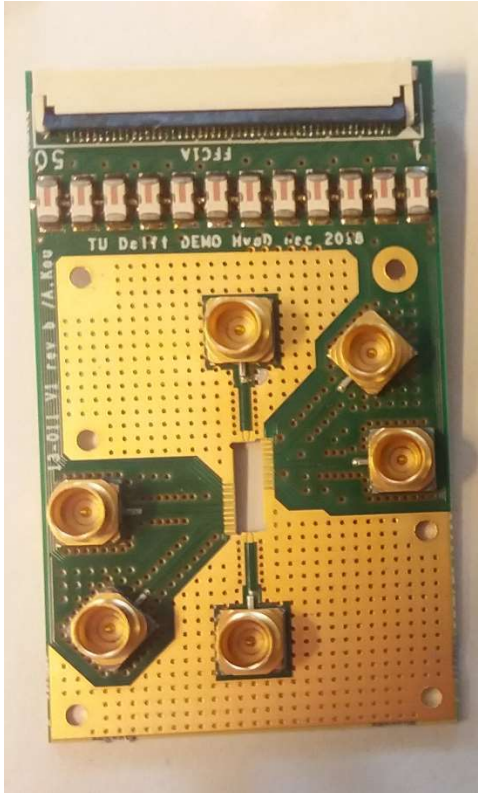
## Size (LxWxT)

51 x 37 x 1.55

## Schematic:







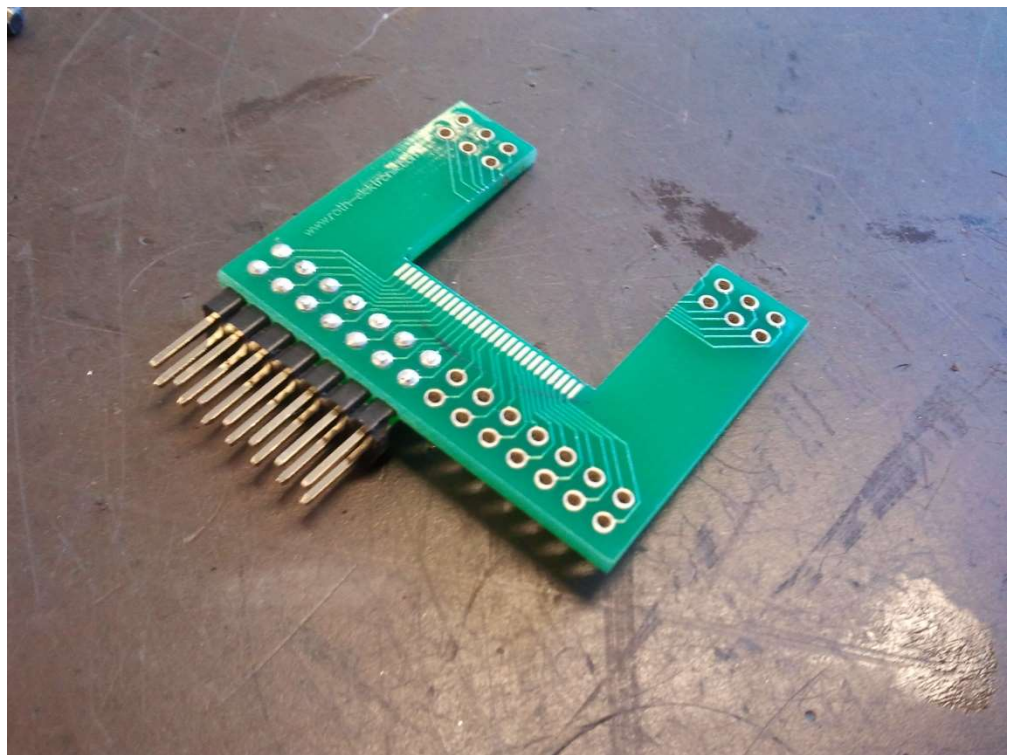
# 13-012 Sample Board Carel Heerkens

Connector:

Copper Finish:

Size (LxWxT)

Schematic:





# 13-021 Sample Board Schneider I

## Connector:

4x FFC35 Right Angle

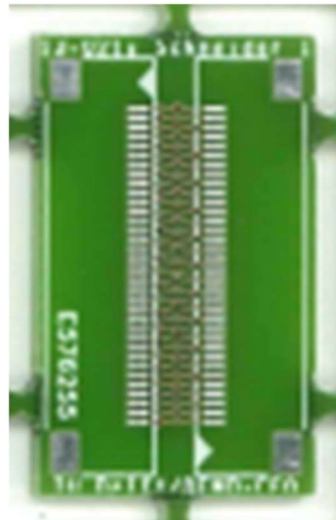
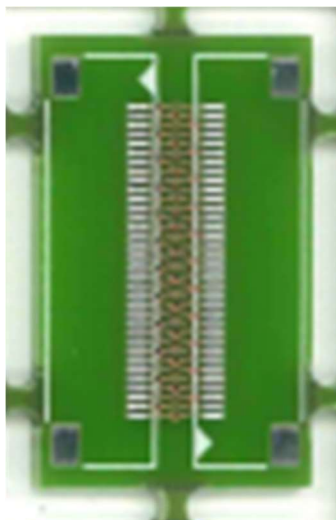
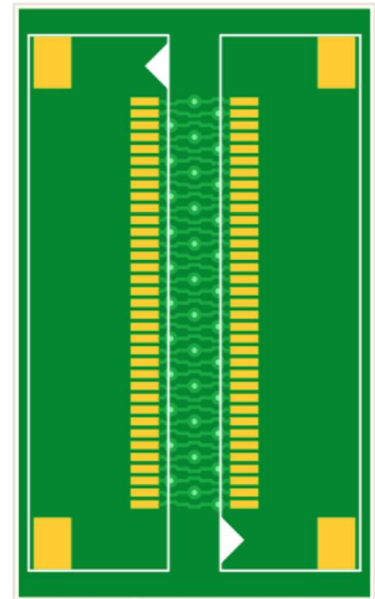
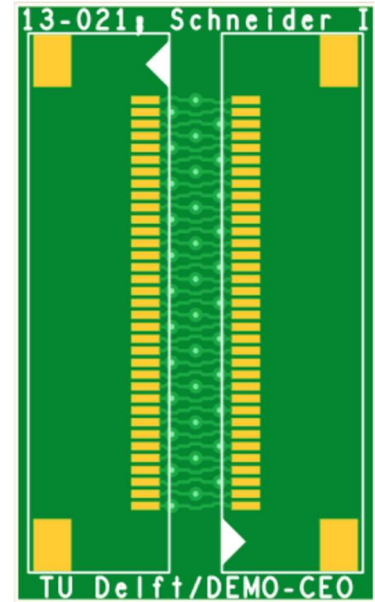
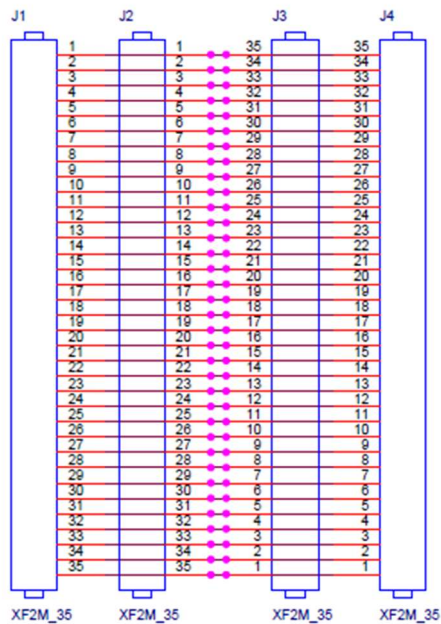
## Copper Finish:

Chemisch Au/Ni Selective

## Size (LxWxT)

25 x 15 x 1.55

## Schematic:



# 13-022 Sample Board Bavincck I

## Connector:

2x SMA Straight Angle

2x FFC10 Right Angle

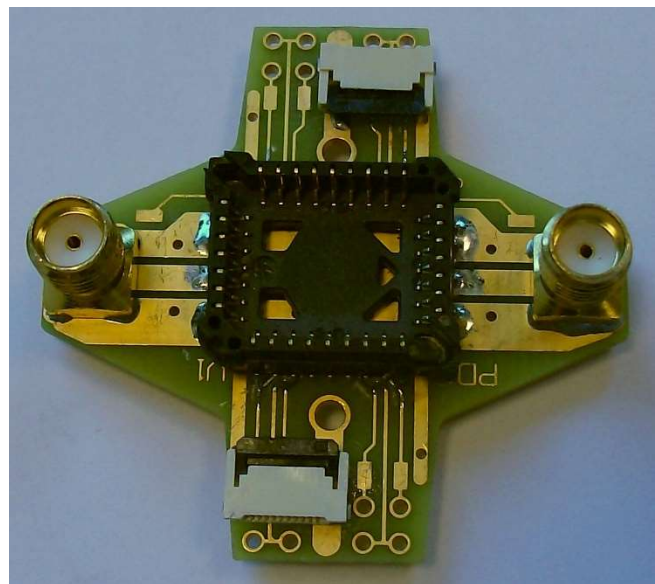
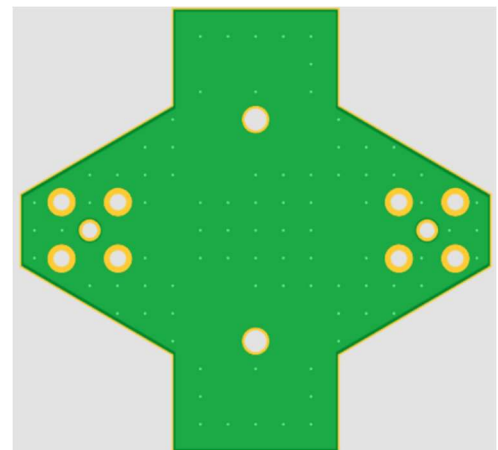
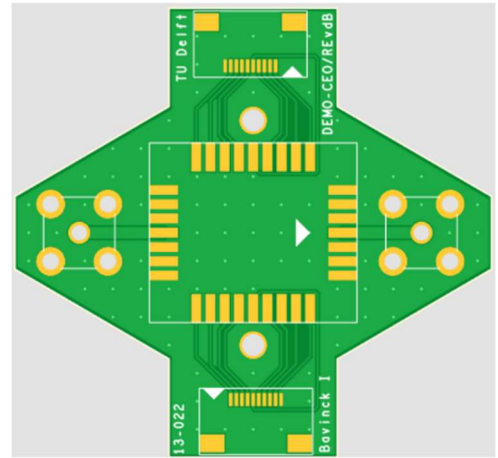
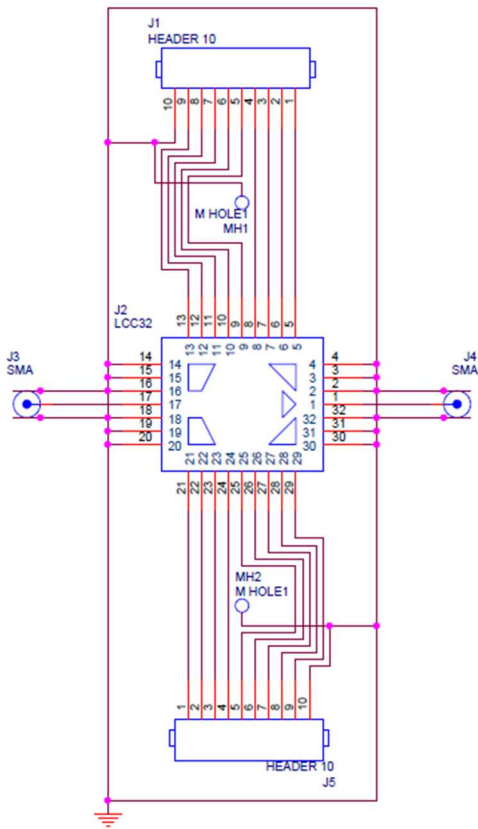
## Copper Finish:

Chemisch Au/Ni Selective

## Size (LxWxT)

40 x 42.5 x 1.55

## Schematic:



# 13-023 Sample Board Cassidy II

13-023-1

**Connector:**

2x Sub-D 25-pin Right Angle

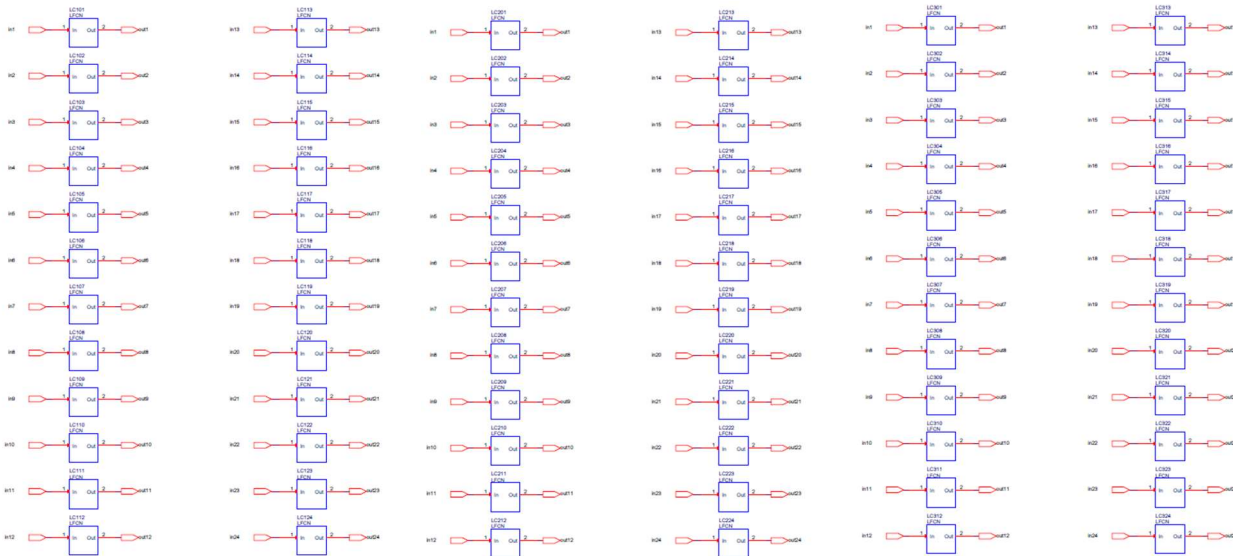
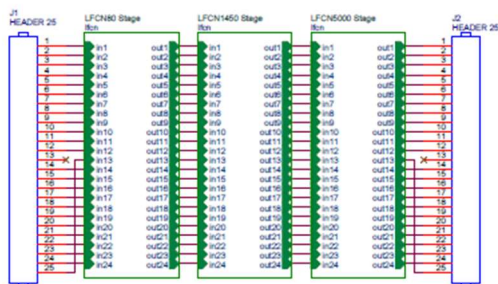
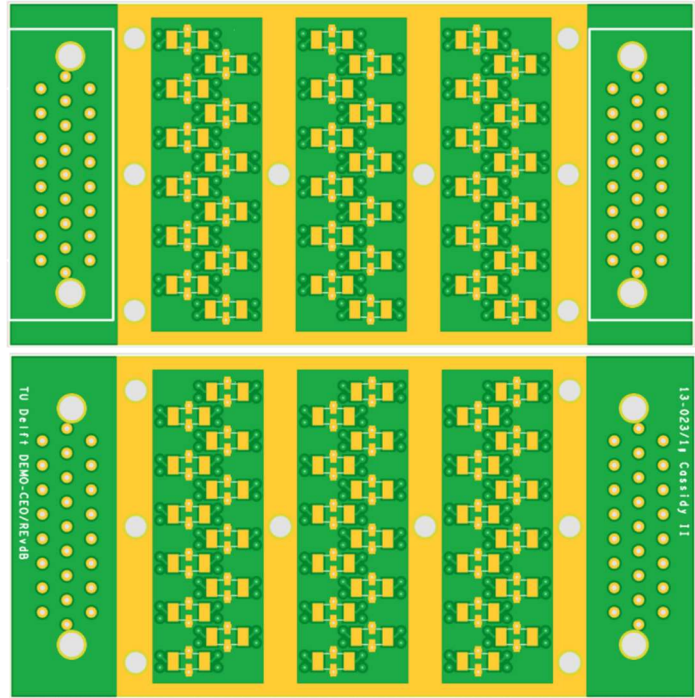
**Copper Finish:**

Chemisch Au/Ni Selective

**Size (LxWxT)**

35.5 x 71 x 1.55

**Schematic:**





13-023-2

**Connector:**

2x Sub-D 25-pin Right Angle

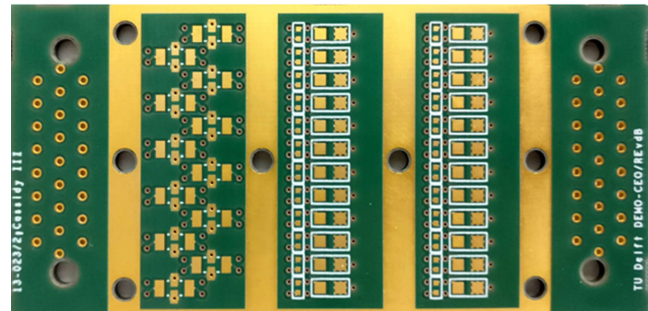
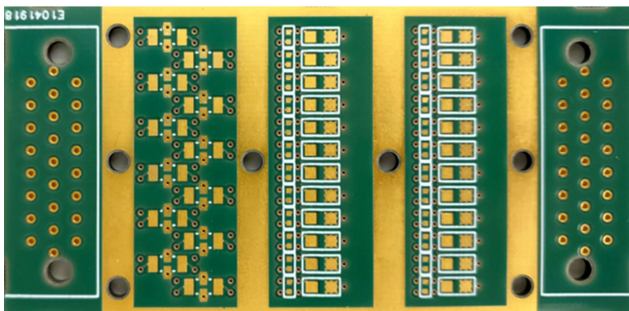
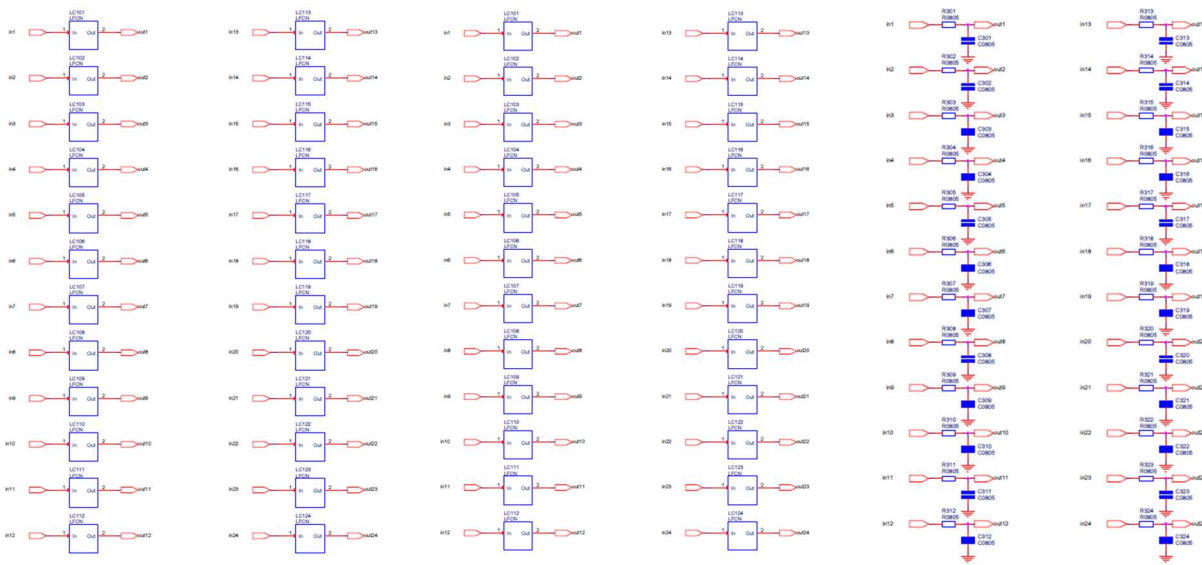
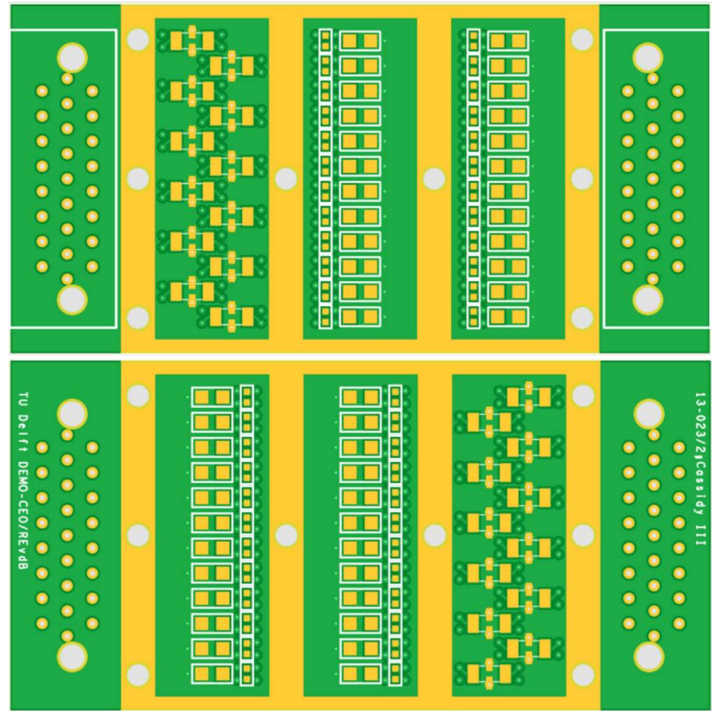
**Copper Finish:**

Chemisch Au/Ni Selective

**Size (LxWxT)**

35.5 x 71 x 1.55

**Schematic:**



# 13-023-3

**Connector:**

2x Sub-D 25-pin Right Angle

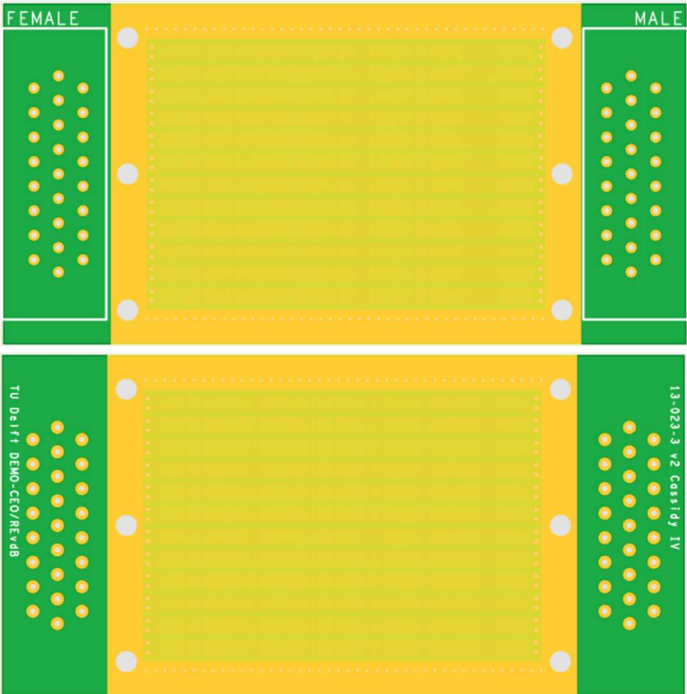
**Copper Finish:**

Chemisch Au/Ni Selective

**Size (LxWxT)**

35.5 x 71 x 1.55

**Schematic:**



# 13-028 Sample Board vWoerkom I

**Connector:**

2x Nano-D 50-pin Right Angle

**Copper Finish:**

Chemisch Au/Ni Selective

**Size (LxWxT)**

53 x 49 x 0.8

**Schematic:**

